



RPM
RETAIL POLISHING MANAGEMENT

Local | Regional | National | Global



001

RPV

What's Inside...

RPM	003
Who We Are	003
What We Do	003
Why You Should Give Us a Try	003
COVERAGE	005
Where We Are Where We Go	006
How it Works	007
WHY POLISH	009
Advantages	009
Go Green! – Everyone's Doing It...	010
Alternative Solutions	011
The Process – How Do We Do It	012
Respect The Spec!	013
Not That You Need it – But Here is Our 10 Year Warranty!	014
OUR SCOPES	015
Sealed Concrete	015
Polished Concrete	017
Stained Concrete	019
Epoxy Coatings	021
Surface Preparation Remediation	023
IMAGE GALLERY	025
Examples of Beautified Concrete	025

“Polished concrete is the fastest growing commercial flooring option in the U.S.”

rpmgroup.pro

**PREP
POLISH
COATING
ATLANTA**

WHO WE ARE...

RPM is Retail Polishing Management LLC.

For many years, our clients have been requesting a better solution for their regional, and national concrete floor processing. Current national, local, and regional providers have not been successful in meeting those expectations on service or value.

In 2014, a group of very successful larger regional polishing companies came together, formed a new company and developed a new approach to address the demand. Since then, our group has increased significantly, providing a unique coverage reach and response unequal in our industry.

WHAT WE DO...

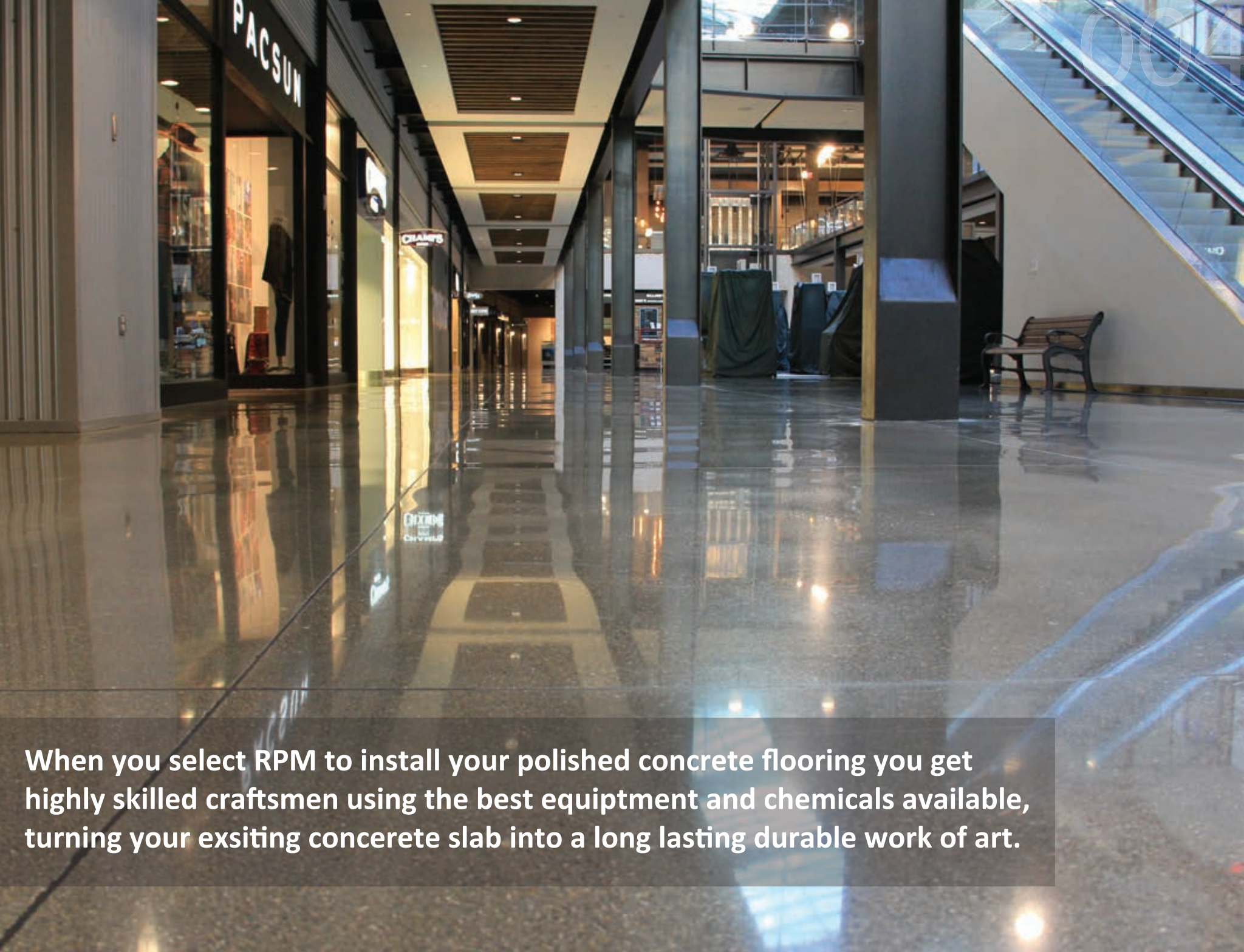
We provide Concrete Sealing, Staining, Polishing, Coating and Surface Preparations & Remediation Services to clients whose various real estate interests are diversely located geographically.

Local Response, Regional Coverage and National Support are what you can expect when you contact with RPM. You get an owner level commitment not a regional manager response.

When you are an RPM National Account Client a single call is all it takes to get equipment and personnel to any of your locations throughout the Continental United States, Hawaii, Alaska, and Puerto Rico.

WHY YOU SHOULD GIVE US A TRY...

- Besides Quality Concrete Floors
- Predictable Results you can count on
- Ease of Consolidated Administration
- Customized Project Management Attention
- Bulletproof Preventive Maintenance Solutions
- Ownership Level Commitment Everytime
- Union Site Coverage
- Unprecedented Responsiveness
- Value Added Solutions to Save Your Budgets!
- **And Whatever We Can Imagine Together!**



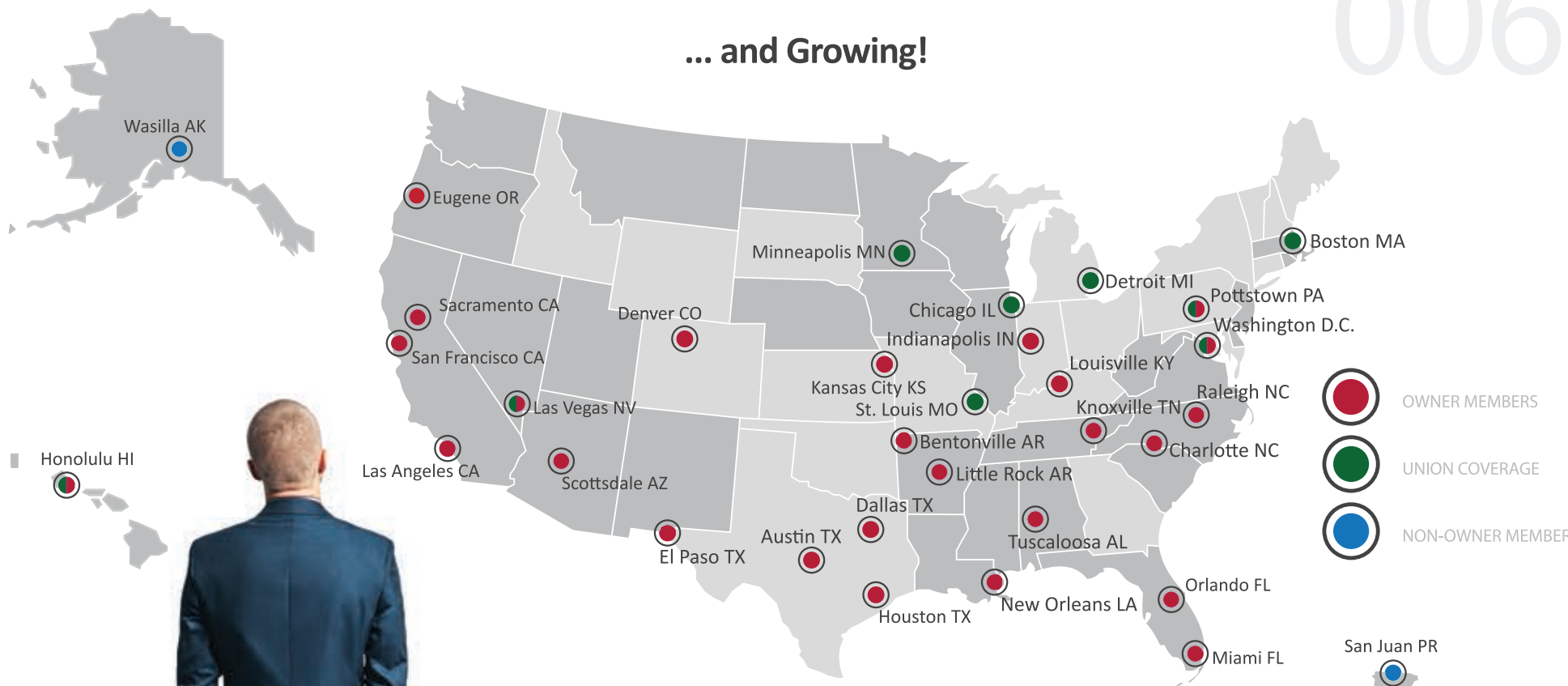
When you select RPM to install your polished concrete flooring you get highly skilled craftsmen using the best equipment and chemicals available, turning your existing concrete slab into a long lasting durable work of art.



RPM

33 locations operating out of
24 states supported by more
than **300** heavy grinding
platforms and a service capacity
of over **100** million square feet
per year. All working together to
service our customers!

... and Growing!



WHERE ARE WE? WHERE DO WE GO?

RPM CAN BE WHERE YOU NEED US, WHEN YOU NEED US!

RPM has coverage in most regions of the Continental United States, and with well resourced locations in Hawaii, Alaska, and Puerto Rico - You can count on RPM to cover all of your real estate interests. We also have you covered at sites where union labor is a requirement.

HOW DOES IT ALL WORK?

007

- 1 SPECIFICATIONS
- 2 QUANTITY TAKE-OFF'S
- 3 PROPOSALS
- 4 PROJECT | CONTRACT ADMIN
- 5 PROJECT MGMT | INSTALLATION
- 6 POST INSTALLATION REPORTING
- 7 CLOSE-OUT | WARRANTY



1

SPECIFICATIONS

In the event that your company does not have a comprehensive specification - **RPM** has two options for you;

1. We will customize our time tested and proven specification template and make it specific for your company – Complimentary!
2. Put you into direct contact with several of the leading manufacturers in our industry so you can choose which is the best solution for your company.

“Awesome Estimators and Sales Pro’s!
That’s How...”



COLOR-CODED TAKE-OFF DRAWINGS

Once the specification is identified, our estimating engineers perform high quality color-coded digital quantity take-off's of your space illustrating what is included in the scope of work for your project.

These take-off's are provided to your team for reference and record keeping.

2



Proposals are easy to read and clearly identify base price and options. Inclusions and exclusions are also clearly identified along with labor costs, project and contact information.

Included with your proposal package is the proposal itself, a worksheet identifying what is standard preparation work, and itemized pricing for additional scopes that may be necessary after the start of your installation. No surprises - predictable pre-negotiated pricing.

3

PROPOSALS

"Detail & Time Oriented Administrative Team."

That's How..."



PROJECT/CONTRACT ADMINISTRATION

Timely, Accurate and Dependable Administration.

4

PROJECT MGMT INSTALLATION

5

RPM Project Managers are a unique and impressive group of industry professionals you can count on to be very responsive and effective. Their breadth of knowledge is unmatched anywhere!

POST INSTALLATION REPORTING

Comprehensive and informative post-installation reporting.

6

"The best PM's, Crews & Foreman in the Industry. That's How..."

CLOSE OUT / WARRANTY

Your project close-out will be efficient and painless, standardized invoicing and an amazing extra... RPM Polished Concrete **10 YEAR WARRANTY!**

7

RPM
RETAIL POLISHING MANAGEMENT
Local | Regional | National | Global

WHY POLISH YOUR CONCRETE?

You mean besides the fact that
its so **BEAUTIFUL!**?

Well - it's also;

*cleaner
stronger
brighter
easier
quicker
cheaper
harder
greener*

It's simply **BETTER!**

- ✓ **EFFLORESCENT DUSTING ELIMINATED**
Polished concrete floor eliminates dusting entirely, making for a much healthier work environment.
- ✓ **RESISTANT TO STAINS**
Polished concrete floor system transforms a porous concrete floor into a tightened surface, dense enough to keep water, oil, and other contaminants from penetrating the surface.
- ✓ **STRONGER MORE DURABLE SURFACE**
The polished concrete process hardens what was once beneath that old deteriorated surface.
- ✓ **INCREASED LIGHTING**
With a floor as reflective as a polished concrete floor, the increased lighting in your facility benefits everyone.
- ✓ **SAFER & LESS SLIPPERY**
It may look like glass, but it has a higher friction co-efficient than most other flooring options.
- ✓ **NO MORE TIRE MARKS**
With a polished concrete floor system, ordinary cleaning removes tire marks immediately.
- ✓ **REDUCTION IN TIRE WEAR**
Level joints and polished concrete make the entire surface smooth, allowing tires to last much longer.
- ✓ **MUCH LOWER MAINTENANCE**
The surface is so tightly compacted that it actually repels oils and other substances, making cleaning much easier than with other floors.
- ✓ **REDUCED DOWN-TIME DURING INSTALL**
Concrete polishing is a dry process and there is no delay in making the floor available for use immediately upon completion.
- ✓ **COST-EFFECTIVE**
Polished concrete is not only less expensive to install than most floor covering materials, it is significantly less expensive to maintain - and never needs replacement.
- ✓ **BEAUTY**
No other floor system can boast such beauty as a Polished Concrete floor system.
- ✓ **NO WAXING OR STRIPPING**
Polished concrete floor system never needs it!
- ✓ **LONGEST-LASTING SOLUTION POSSIBLE**
There is simply no comparison to other floor systems when it comes to how long a floor can last.

GO GREEN | ECO FRIENDLY

High in durability and low in environmental impact, concrete is the perfect flooring material for sustainable work places. As builders and business owners discover the benefits of green construction, without sacrificing aesthetics or going over budget, there are more retail, industrial, commercial and public spaces starting to use polished concrete flooring. Going green isn't just good for the planet...it saves money too.

Concrete floors, left exposed, help conserve resources by functioning as a foundation slab — when they are given a stain or polish, concrete flooring also has a decorative and aesthetic look. In other words, polished concrete floors offer the benefits of both form and function!

DESIGN VERSATILITY

Decorative techniques such as polishing, coloring, staining, and stenciling give you a wide variety of design choices, allowing you to create floors that look like more traditional materials, such as tile or slate, or a custom design that is completely unique. There are also more environmentally friendly options for products used to color, stain, and seal concrete.

DURABILITY & RESOURCE CONSERVATION

When properly installed and sealed, a decorative concrete floor should last a lifetime, and with proper maintenance, it will never need to be replaced. Few flooring materials can achieve this. Concrete floors also utilize sustainable materials. The main raw material for the cement in concrete is limestone; the most abundant mineral on earth.

ENERGY EFFICIENCY

Because of their thermal mass and ability to retain heat, concrete floors are ideal for passive solar designs. When spaces are built to take advantage of solar radiation entering through windows in the winter months, concrete floors will absorb the heat from the direct sunlight and release the stored heat as needed. It also increases ambient lighting by as much as 30%!

ECONOMICAL

An exposed concrete floor is almost always an economical alternative to other solutions that require an additional covering, such as hardwood flooring and tile. For new commercial projects with site-cast concrete floor slabs, leaving the concrete floors exposed can save a lot of money over the life of the building.



RPM | EARTH FRIENDLY

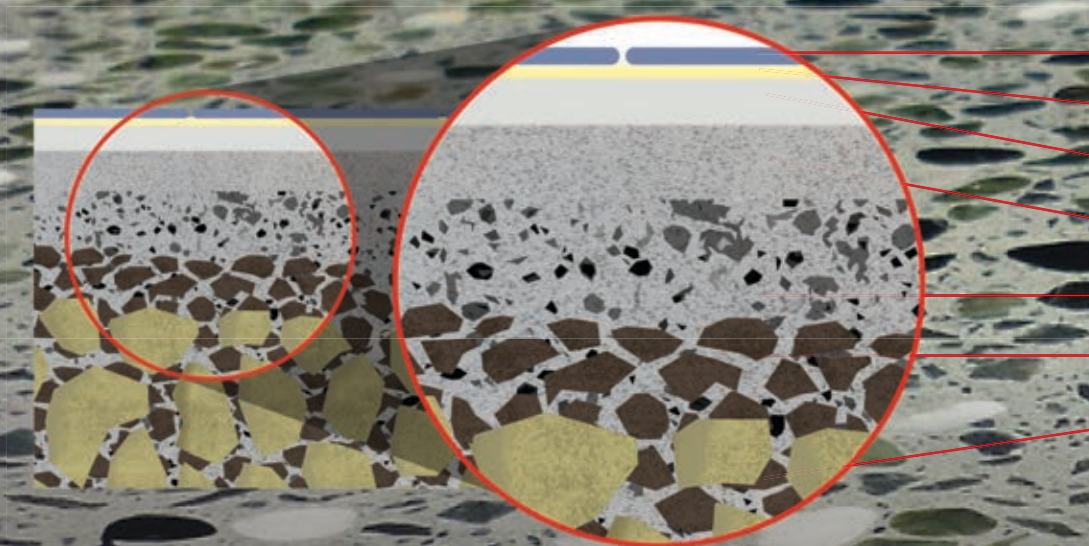
ALTERNATIVE SOLUTIONS?

We ARE the alternative solution!

**“For my facilities - Polished & Sealed
Concrete is the only way I go!”**

(“They won’t see my face - right?”)

- Carpet Supplier



Existing Floor Covering
Coating, Adhesive or Mortar
Cream Finish
Salt & Pepper Finish
Medium Aggregate
Heavy Aggregate
Large Aggregate

How Do We Do It?

GRINDing

STEP ONE: Grind the floor with industrial strength diamond tooling. This process removes existing coatings, adhesives, and other imperfections exposing the raw concrete. The grinding process can be minimal or extensive depending on the desired level of aggregate exposure or the condition of the concrete slab.

DENSIFYing

STEP TWO: Harden the concrete substrate with a densifier that will penetrate the surface and chemically react to its natural materials to harden and seal the concrete by filling pores and creating a significantly denser surface. This process is a critical and important step to the successful processing of the polished concrete floor.

POLISHing

STEP THREE: Polish the floor with progressively finer diamond tooling. This process is what produces the shine and clarity. A concrete floor can be polished to a matte, medium, or high gloss finish. Adding color would be done during this process.

	Installed Cost /sf	Annual Maint /sf	Expected Life	10 Yr Life Cost /sf
Acrylic Coating	\$0.25	\$0.50	6-12 mos	\$5.10
Epoxy Coating	\$1.75-5.25	\$1.50	1-5 yrs	\$16.50-20.00
Urethane Coating	\$1.00-2.25	\$1.50	2-9 yrs	\$15.75-17.00
Sheet Vinyl	\$3.25-5.25	\$1.50	9 yrs	\$18.00-25.00
VCT	\$1.75-4.25	\$1.50	+10 yrs	\$16.00-20.00
Carpet	\$2.75	\$1.50	+5-10 yrs	\$17.50-20.00
Ceramic Tile	\$7.25-8.25	\$1.50	+10 yrs	\$22.00-23.00
Cement Terrazzo	\$12.50	\$0.70	+10 yrs	\$19.00
Epoxy Terrazzo	\$13.50	\$0.50	+10 yrs	\$18.00
Polished Concrete	\$3.00-7.00	\$0.25	+20 yrs	\$5.00-7.50

	Carpet	Ceramic Tile	VCT & Sheet Vinyl	Hardwood & Laminated	Natural Stone	Polished Concrete
Design Options	YES	YES	YES	YES	YES	UNLIMITED
Performance	POOR	GOOD	GOOD	GOOD	EXCELLENT	EXCELLENT
Longevity	POOR	GOOD	GOOD	GOOD	GOOD	EXCELLENT
Maintenance Ease	NO	NO	NO	NO	MAYBE	YES
Store & Release Solar Energy	YES	NO	YES	YES	NO	NO
Moisture Vulnerability	NO	YES	YES	NO	YES	YES
Mold, Dust, Mildew Resistant	NO	YES	MAYBE	MAYBE	YES	YES
Sustainable	\$3.50-6.75	\$11-22	\$2.75-5.75	\$8-10	\$20-50	\$3-7
Square Foot Cost						

RESPECT[®] THE SPEC.

Retail Polishing Management LLC (RPM) and its membership believe in the importance of specifications and the interface their function creates between the supplier and the owner.

The supplier identified in this commitment is one that has certified our company in the intended use and/or installation of their product and requires that certification to purchase and/or obtain a warranty for their product.

We acknowledge that our supplier has put forth effort and expense for the purpose of receiving the benefits that come with having their product included in specifications and that our Supplier has a reasonable expectation that we will honor that specification.

We understand that our Supplier will engage in competitive activities in the normal course of their business to protect and/or cause or affect change in specifications and we agree not to interfere in those activities.

WE ARE COMMITTED TO AND ARE HEREBY RESOLVED;

- 1** That we will install the specified product of our Supplier in all cases and under all circumstances regardless of any financial incentives to do otherwise.
- 2** When one or more products are specified by more than one Supplier, it will be at our discretion which product is most appropriate for the project.
- 3** If there is an alternative product listed in the specification to our Suppliers product that is an 'off shelf' product, or if an 'or equal' is stated in any specification, we will only provide for the bid, installation and/or use of our Suppliers product exclusively.
- 4** Under no circumstance will we recommend, submit a proposal for, install and/or use an alternate product to the one exclusively listed in the specification of our Supplier and identified in our bid.

RPM
RETAIL POLISHING MANAGEMENT

**! RESPECT[®]
THE
! SPEC.**



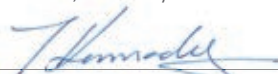
“We follow
the rules...
and we
stand by our
workmanship!”

RPM
RETAIL POLISHING MANAGEMENT
Local | Regional | National | Global

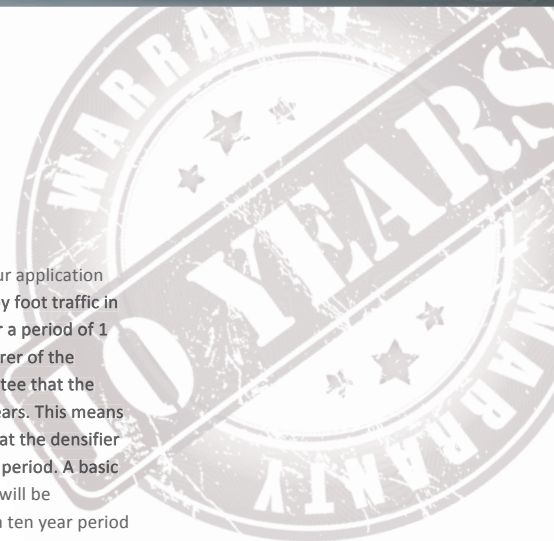
Your Warranty!

*W*E, the certificated installer, warrant our application polishing system to be free of dusting caused by foot traffic in under normal use and service of the system for a period of 1 year from the installation date. The manufacturer of the concrete polishing system however will guarantee that the floor will remain densified for a period of 10 years. This means that if the floor was put under a microscope that the densifier will still be present in the floor after a ten year period. A basic one step grind, densify and re-polish is all that will be necessary to rejuvenate a polished floor after a ten year period if maintained properly. There are many ways to prolong the longevity of your new polished concrete floor. This warranty does not cover the longevity of the floors polished shine. It is up to you the customer to maintain this shine by using the proper cleaning materials as mentioned. If the floor fails to perform as indicated as per its advertised claims and benefits after a one year period, the installer will provide the necessary labor, materials and equipment to re-apply a standard application of densified used in the concrete polishing system.

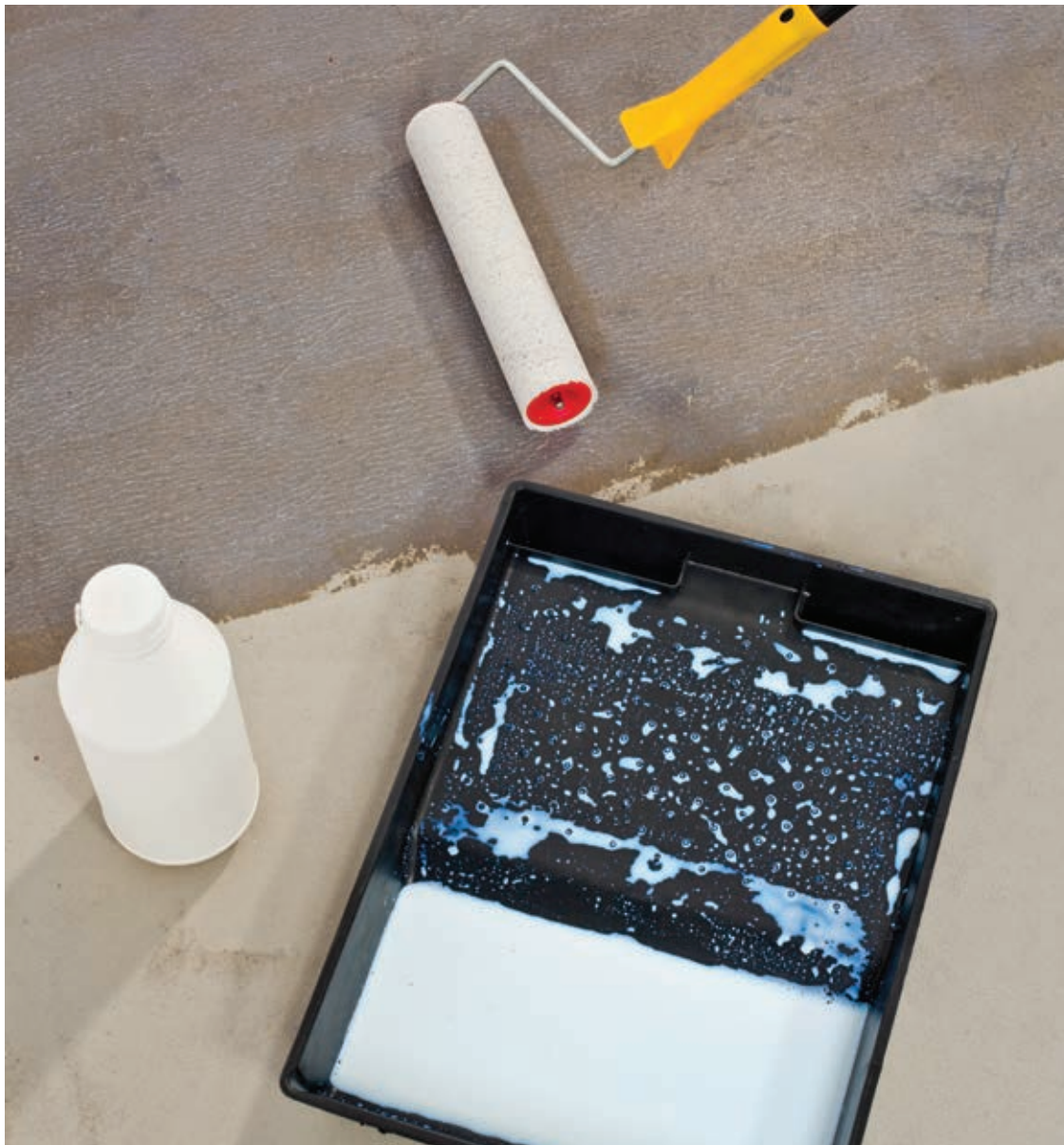
This warranty does not apply to defects resulting from faulty concrete, structural defects, abuse or any other unusual circumstance beyond the scope of the product limitations. The foregoing warranty to re-apply a standard application of concrete polishing system is the only warranty, either expressed, implied or statutory, upon which the said application is sold. All other damages, liabilities or warranties, statutory or otherwise, are hereby waived.



President, Retail Polishing
Management LLC







CONCRETE SEALERS PROTECT YOUR SUBSTRATE FROM THE ELEMENTS

Using a concrete sealer prevents water from penetrating the material, reducing the risk of cracks and other types of water damage. Stains are also greatly reduced. Preventing staining and moisture can discourage the growth of mold that might use the concrete as a substrate.



- Increase the concrete's longevity
- Improves appearance
- It is cost effective
- Fast & efficient installation
- Reduces spalling, flaking and cracking
- Protection from oil spills and other stains
- Mold and mildew resistant



POSSIBLE

017



POLISHED CONCRETE IS THE PREMIUM FLOORING SOLUTION FOR ANY APPLICATION

The durability and performance of polished concrete makes it a leading choice finish for retail stores, warehouses, office facilities, and municipalities. Even homeowners are making the choice towards these beautiful, high-luster floors that imitate the look of polished stone.

- Increase the concrete's longevity
- Improves appearance and visual appeal
- Adds value to the property
- Least expensive to install in most cases
- Reduces spalling, flaking and cracking
- Protects from stains and spills
- Mold and mildew resistant



			
GOLD	RAW SIENNA	CARAMEL	SAND
			
TERRA COTTA	MAHOGANY	SADDLE BROWN	CHOCOLATE BROWN
			
WALNUT	BURNT SIENNA	CHESTNUT	RED
			
MAROON	SEPIA	EGGPLANT	TURQUOISE
			
SLATE BLUE	PATRIOT BLUE	GREEN	PINE GREEN
			
FOREST GREEN	GRAY	BLACK	MIDNIGHT BLACK



COLORED CONCRETE IS BEAUTIFUL, ELEGANT AND A WARM FLOORING SOLUTION

The Process of coloring concrete involves either injecting color into the pores of the concrete using dye or inducing a chemical reaction that changes the color of the concrete itself. These processes are not a paint or topical coating so the color is extremely long lasting with a deep and rich texture.

- Great durability
- Elegance & beauty
- Energy savings
- Light maintenance
- Optimal air quality
- Unsurpassed water resistance
- Sustainable





EPOXY COATINGS ARE DURABLE, RUST & CHEMICAL RESISTANT

Providing outstanding resistance to corrosive chemicals, heat, and ultra violet light. Epoxy Coatings also exhibit excellent dimensional stability, extreme toughness, and abrasion resistance. They come in a variety of color and texture options.



Epoxy floor coatings are a fantastic choice for automotive shops, shopping centers, food processing plants, airplane hangars, wineries, laboratories, kennels, warehouse facilities, printing facilities, Industrial, loading docks, pharmaceutical, packaging, locker rooms, restrooms, etc.



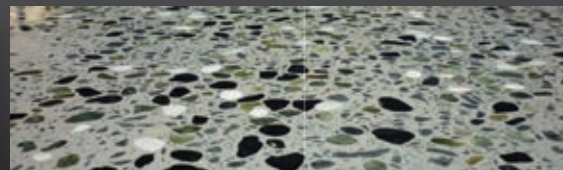
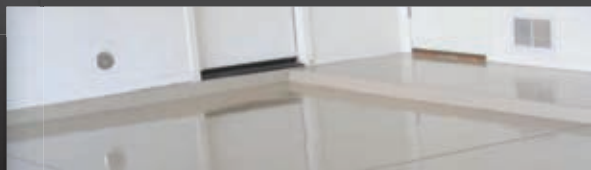
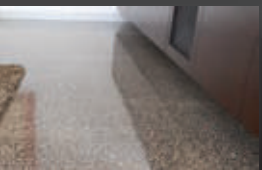


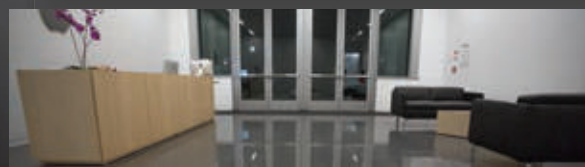
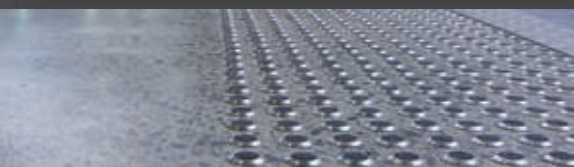
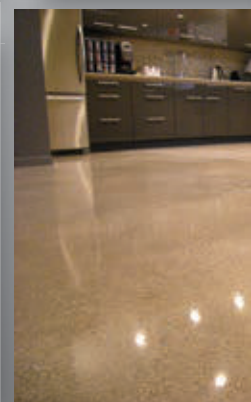
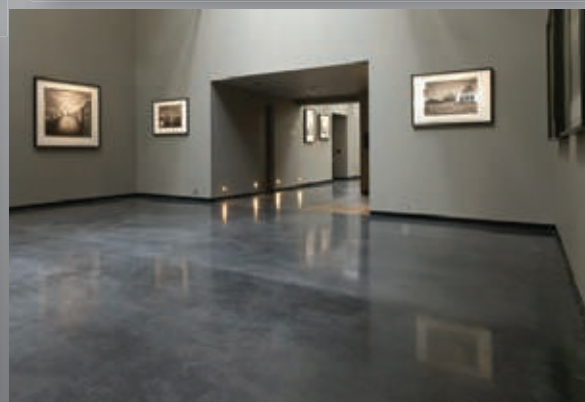
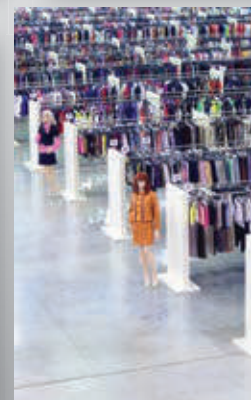
PROPER SURFACE PREPARATION IS ESSENTIAL TO ACHIEVING GREAT RESULTS!

Surface Preparation is an extremely important part of any decorative concrete solution. Whether it is removing existing coatings or impurities, leveling or profiling the substrate to apply other coatings; Surface Preparation done correctly ensures proper bonding to your substrate.



- Remove existing coatings
- Remove surface impurities
- Repair cracks and spalls
- Leveling and profiling
- Overlayments
- Repair surface blemishes
- Moisture remediation





Retail Polishing Management LLC

Concrete Sealing, Staining, Polishing, Coating & Surface Prep Solutions for clients whose various real estate interests are diversely located geographically.

Processing and Beautifying Concrete for National Accounts is what we do...

888.RPM.1111

www.rpmgroup.pro
info@rpmgroup.pro



Local | Regional | *National* | Global

